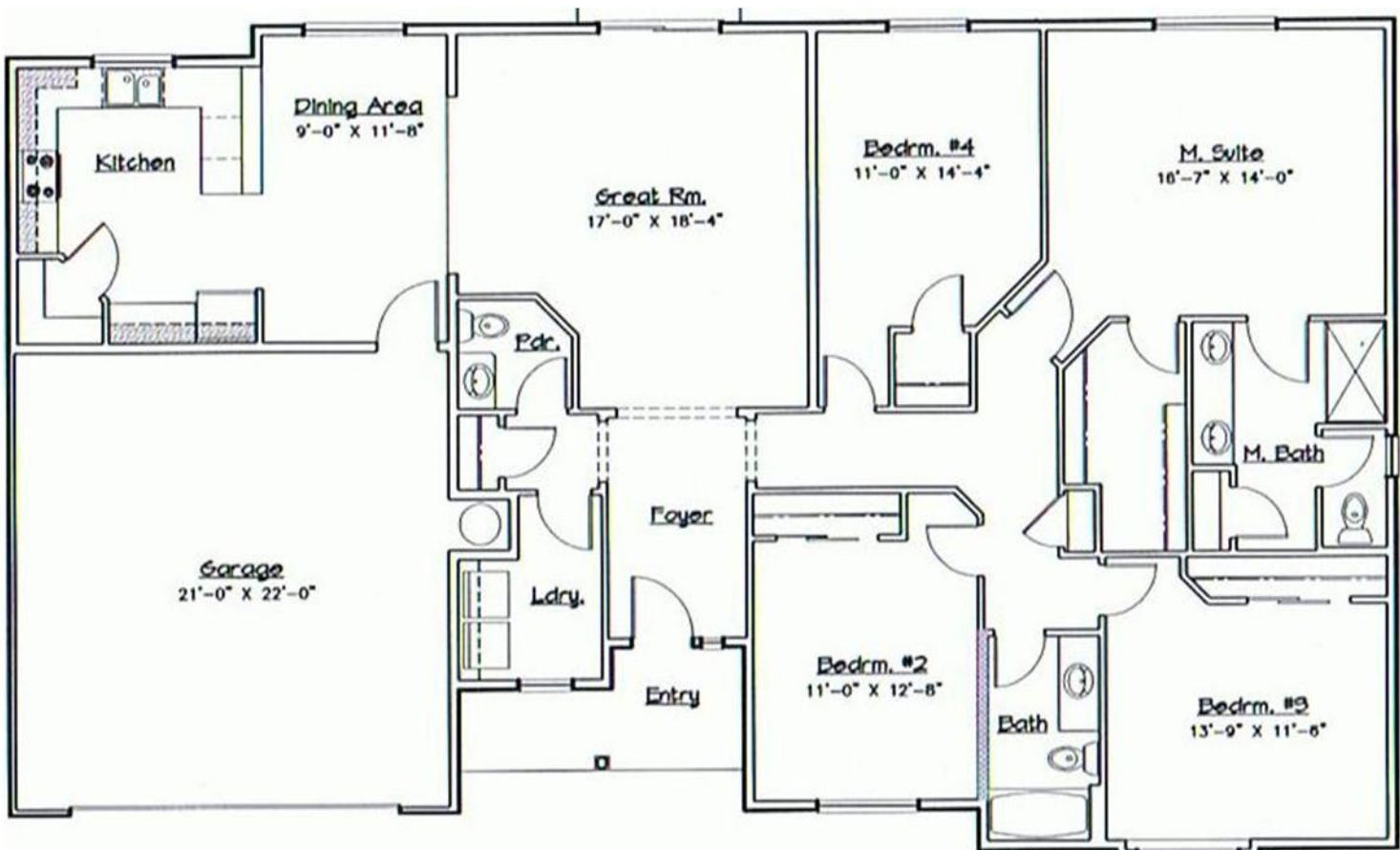




RIVER VIEW POINTE

2055 S. F.
4bdr/2.5ba

Kuo-Ying Frenzel Broker-CCIM
308-2369
kuoying@verizon.net
www.NWPCrealestate.com



T.R. Masterson Construction

The builder reserves the right to modify floor plans, elevations, designs and prices. Renderings and graphics are for illustrative purposes only. Square footage and house dimensions are approximate. Prices subject to change at anytime without notice.



GREAT ROOM FROM DINING/KITCHEN



VAULTED GREAT ROOM



MASTER BEDROOM



MASTER BATH



ENTRY WITH ART NICHE/ DEN WITH DOUBLE DOORS TO THE RIGHT



KITCHEN